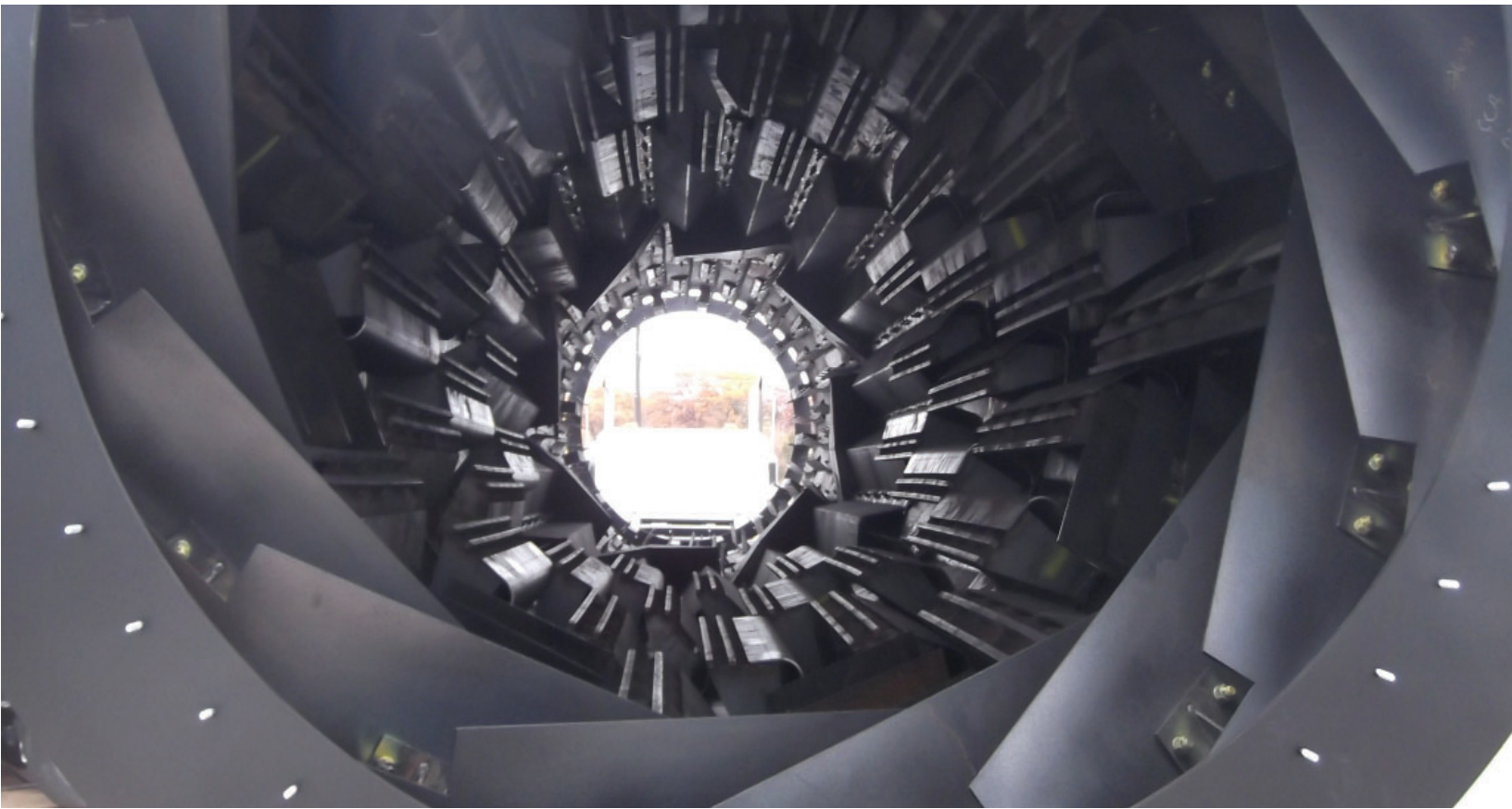




**CLIMATE  
ENGINEERS**



**INDUSTRIAL • MANUFACTURING • HVAC • SPECIALTY**

Cedar Rapids • Quad Cities  
[www.climate-engr.com](http://www.climate-engr.com)

# TABLE OF CONTENTS



## **PRESIDENT'S MESSAGE**

- Our Services
- How We're Different

## **COMPANY OVERVIEW**

- Sales & Workforce Volume
- History

## **SAFETY**

- Safety Practices
- Safety Awards

## **FACILITIES**

- Cedar Rapids
- Quad Cities

## **CAPABILITIES**

- Equipment
  - Industrial
  - HVAC
- Technology
- Welds & Materials
- Specialty Materials
- Painting
- Trucking Fleet

## **OUR WORK**

- Industrial
- Manufacturing
- HVAC
- Specialty
- Architectural

# PRESIDENT'S MESSAGE

*Climate Engineers' focus on relationships, innovation, and safety are the fundamental values that allow us to consistently deliver custom sheet metal projects to commercial and industrial markets in the Midwest.*

*A strong relationship with employees and customers is critical to the success of Climate Engineers. Relationships with our employees are built through open communication, individual ownership of projects, team building and community involvement events. We believe that a rewarding work environment for employees results in a higher level of service for our customers. Climate Engineers builds lasting relationships with customers by working with their team to provide tailored solutions to their sheet metal needs. Customers have confidence that we will provide a high quality product on time and within their budget.*

*Innovation and investment in technology has set us apart from other sheet metal companies. Innovations in logistics and timekeeping have reduced costs, increased quality, and provided more reliable scheduling. Real-time product orders and clean flatbed delivery of product are some of the practices that have expedited project completion timelines and provided more consistent quality in the delivered products.*

*Climate's training, procedures, and facilities all assign safety as a top priority. This has led to a reputation as a national leader in safety. Numerous organizations have recognized our safety programs and practices, which includes Climate's annual Safety Celebration.*

*We look forward to discussing how we can design, fabricate, and install a custom sheet metal solution that is on schedule and within budget for next project.*

**Peter Watson**  
**President, Climate Engineers**

## OUR SERVICES

- Industrial Ventilation & Fabrications
- Commercial HVAC Systems & Fabrications
- Manufacturing Fabrications
- Specialty Fabrications
- Plant Maintenance
- Architectural Services
- HVAC Service & Controls

## HOW WE'RE DIFFERENT

- Prefab Innovation
- National Leader in Safety
- Industrial Fabrication Capacity
- Customers
- Community Involvement
- Employee Retention

# COMPANY OVERVIEW

Established in 1947, Climate Engineers has developed a reputation for providing high-quality custom sheet metal fabrications. We have served the commercial and industrial markets for more than 70 years, providing timely delivery of the ventilation/HVAC, ingredient, and material handling systems required by food, ethanol, and other processing plants.

With locations in Cedar Rapids and near the Quad Cities, we can efficiently serve the manufacturing and industrial firms of the Midwest.

## EXPEDITING INSTALLATIONS

Climate Engineers excels at providing commercial, manufacturing, and industrial sheet metal solutions that meet the timelines and precise specifications required by the client. Project managers, expert CAD operators, and experienced field foremen work together with advanced equipment to provide a precise, safe, and quick solution. Clients avoid costly production delays because of Climate's coordinated effort at all levels.

## INDUSTRIAL FABRICATION CAPACITY

A number of our customers have worked with us for many years due to our ability to facilitate short

shutdown periods. Our responsiveness comes as a result of a large, experienced team and our capability to run two–three shifts. We also stock popular materials in order to meet immediate demands.

## SAFETY SPECIALISTS

A priority on safety is critical to the successful execution of commercial and industrial projects. Numerous organizations have recognized Climate Engineers for maintaining excellence in safety and health. Safety and quality are preeminent concerns shared by all employees. These details are monitored by an employee safety committee, which also facilitates the implementation of new programs and training courses.

## FLEXIBLE & DEDICATED STAFF

The Cedar Rapids and Quad Cities locations offer flexible shifts and facilities to ensure the ability to complete multiple large-scale projects simultaneously. We are proud of our company's ability to respond quickly to any client request and increase capacity as required. Our computer-aided estimating and CAD staff work together to minimize turnaround and anticipate issues that can arise on demanding industrial projects.

*Cedar Rapids Location*



*Quad Cities Location*





# SALES & WORK FORCE VOLUME

## SALES VOLUME

2025	2024	2023	2022	2021
\$53M+	\$52M	\$45M	\$40M	\$37.5M

## WORK FORCE VOLUME

**160 Employees** (average over the past 5 years)

Office Personnel: 30	CAD Department: 10
Shop Employees: 45	Service Department: 10
Field Employees: 70	

## SHIFTS

Capable of 2- or 3-shift operation

# SAFETY PRACTICES



Climate Engineers has an active Safety Committee that includes representatives from management, shop and field. The Committee holds monthly meetings and conducts job site inspections to ensure a safe work environment for all employees.



The superintendent (or the designated coordinator) holds weekly Tool Box Talks for the entire crew. This aids in:

- Identifying hazards and unsafe work practices
- Removing obstacles for incident prevention
- Helping the company evaluate the accident and illness prevention program



On projects with crews of six or more, the superintendent designates a safety coordinator to oversee daily safety issues.



Climate Engineers' EMR history is available upon request



An annual Safety Celebration is held each summer to celebrate and recognize employee dedication to safety. During this celebration, we hold training sessions on various topics each year.

# SAFETY AWARDS



## 2024

- Illowa Safety Award for Outstanding Safety Record  
Presented by IMPACT Illowa Construction  
Labor and Management Council
- Certificate of Achievement for Total OSHA  
Recordable Rates below the Industry Average  
Presented by Millennium Insurance Co., Ltd.



## 2023

- Award of Honor - Outstanding Safety  
Performance for Small Member Category  
Presented by Millennium Insurance Co., Ltd.
- Illowa Safety Award for Outstanding Safety Record  
Presented by IMPACT Illowa Construction  
Labor and Management Council
- Certificate of Achievement for Total OSHA  
Recordable Rates below the Industry Average  
Presented by Millennium Insurance Co., Ltd.



## 2022

- SMACNA Safety Excellence Award
- Illowa Safety Award for Outstanding Safety Record  
Presented by IMPACT Illowa Construction  
Labor and Management Council
- Award of Honor - Outstanding Safety  
Performance for Small Member Category  
Presented by Millennium Insurance Co., Ltd.
- Certificate of Achievement for Total OSHA  
Recordable Rates below the Industry Average



## 2021

- SMACNA Safety Excellence Awards  
1st Place - 200,000/300,000 man-hour category
- Illowa Safety Award for Outstanding Safety Record  
Presented by IMPACT Illowa Construction  
Labor and Management Council
- Certificate of Achievement for Total OSHA  
Recordable Rates below the Industry Average  
Presented by Millennium Insurance Co., Ltd.



## 2020

- SMACNA Safety Excellence Awards  
1st Place - 200,000/300,000 man-hour category
- Illowa Safety Award for Outstanding Safety Record  
Presented by IMPACT Illowa Construction  
Labor and Management Council
- Award of Excellence - Outstanding Safety  
Performance for Small Member Category  
Presented by Millennium Insurance Co., Ltd.
- Certificate of Achievement for Total OSHA  
Recordable Rates below the Industry Average

OUR GOAL IS **ZERO** INJURIES IN THE WORKPLACE

# CAPABILITIES

## INDUSTRIAL

### ROLL FORMING

(1) 10' x 7/8" Plate Roll  
(1) 8' x 1/2" Plate Roll  
(2) 6' x 1/2" Plate Roll  
(2) 6' x 1/4" Plate Roll  
(2) 3' x 1/8" Plate Roll  
(2) 6' x 14 GA Roll

### PRESS BRAKES

(1) Cincinnati 10' x 135 ton  
(1) Cincinnati 14' x 350 ton  
(1) Cincinnati 12' x 175 ton

### SHEARS

(1) Accushear 12' x 1/4"

### BURN TABLES

(1) Mg Hy Definition 7' x 15' – Cut Capacity of 1 1/2" Plate

### LASER TABLE LASER WELDER

Mitsubishi 6k Fiber-Optic 6' x 12' -- Cut Capacity of 1/2" Plate  
IPG Photonics LightWELD XR

### SAWS

Hyd. Mech 16" Round with 50 Degree Miter  
Hyd. Mech 12" Round With 50 Degree Miter  
(2) Bailiegh 9" Round With 60 Degree Miter  
(2) Doringer Cold Saws -- 4" Solid Bar Max Capacity

### IRONWORKERS

Geka – 6 x 6 x 1/2" Angle Cut  
Pirahna P3

### MILLS

(2) Bridgeports  
Regular Drill Big – 1 1/2" Thick  
Jancy Bit – 3" Thick  
Bore Bit – 14" Thick

### TANK TURNING ROLL

Webb: (2) 12" Rd To 16' Rd Diameter – 50,000 Lbs Capacity  
Webb: (1) 3" To 96" Rd Diameter – 6,000 Lbs Capacity

### WELD POSITIONERS

Profax: (1) 24 1/2" Rd Diameter  
With 0-135 Degree Angle - 1,750 Lbs Capacity

# FACILITIES

## CEDAR RAPIDS

### ROBINS ROAD LOCATION

<b>SHOP</b>	30,000 Sq Ft Shop ( <i>Hook Height 17'-3"</i> ) <ul style="list-style-type: none"><li>(3) 1 ton Overhead Cranes</li><li>(4) 1 ton Jib Cranes</li><li>(1) 10 ton Overhead Crane with 5 ton Aux Crane</li><li>(5) 5 ton Overhead Cranes</li><li>(1) 5 ton Overhead Crane with 5 ton Aux Crane</li></ul>
<b>PAINT BOOTH</b>	2000 Sq Ft Paint Facility with 1 ton Overhead Crane
<b>STORAGE</b>	4,000 Sq Ft Cold Storage Building
<b>OFFICE SPACE</b>	8,000 Sq Ft

### B AVE LOCATION

<b>SHOP</b>	71,500 Sq Ft Shop ( <i>25,000 Sq Ft High Bays, Hook Height 33'-0"</i> ) Overhead Cranes <ul style="list-style-type: none"><li>(1) 60 ton</li><li>(3) 50 ton</li><li>(2) 20 ton</li><li>(2) 10 ton</li><li>(4) 5 ton</li></ul> Jib Cranes <ul style="list-style-type: none"><li>(6) 2 ton</li><li>(5) 3 ton</li></ul>
<b>PAINT BOOTH</b>	1200 Sq Ft Paint Booth with 6 ton Pneumatic Crane

## QUAD CITIES

<b>SHOP</b>	20,000 Sq Ft Shop <ul style="list-style-type: none"><li>(1) 10 Ton Overhead Crane</li><li>(6) 2 Ton Jib Crane</li></ul>
<b>STORAGE</b>	5 Acres Outside Laydown Space
<b>OFFICE SPACE</b>	4,000 Sq Ft



# CAPABILITIES

## HVAC

### COIL LINE

Iowa Precision Full Coil Line

### BURN TABLES

(2) Retro 5' x 10' – Cut Capacity of 3/4" Plate

### LASER TABLES

Bodor 6KW Fiber Laser 6' x 12' – Cut Capacity of 1/2" Plate

### KOOLDUCT/ THERMDUCT

KD3Z CNC Router Table 4' x 13'  
KD400 Straight Duct Machine  
Thermaduct Bender 13' long

### ROLL FORMING

(1) Roper Whitney 4' x 16 ga.  
(1) New Dimension 5' x 10 ga.

### PRESS BRAKE

(1) Diacro 12' x 175 ton  
(1) Whitney Autobrake 10' x 14 ga.  
(1) Cincinnati 10' x 135 ton

### SHEAR

(1) Wysong 10' x 10 ga.  
(1) Lodge & Shipley 10' x 10 ga.

### IRONWORKER

Piranha P50

### COMPONENT

Engel 5' Power Seamer  
Corner Matic  
Drive Turners (Power & Hand)  
Iowa Precision Conduit Machine



# CAPABILITIES

## TECHNOLOGY

### INDUSTRIAL CAD

Autodesk AutoCAD with Qualified CAD Operators  
Autodesk Inventor with Qualified CAD Operators

### HVAC CAD

Trimble East Coast CAD/ Autodesk MEP w/ Qualified CAD Operators  
Autodesk Points Software

### BIM CAPABILITIES

Autodesk Navisworks BIM Collision Checking

### TOTAL STATION

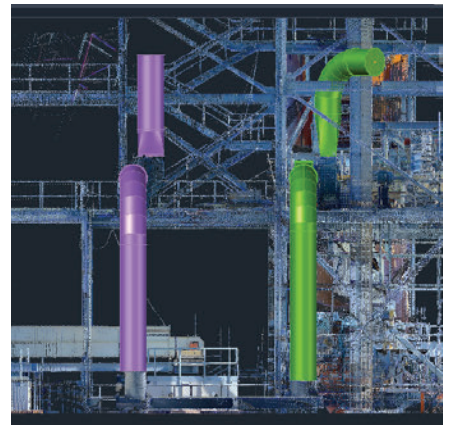
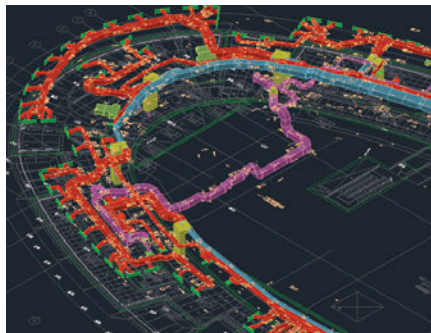
MEP automated layout system to fast-track installation of hanger systems. Points from CAD are directly downloaded to total station and sent to the field to locate each hanger point for install either above or below the floor, roof or decking.

### 3D SCANNER

State-of-the-art 3D scanner that is powerful, precise, fast processing scanning action to gather all the data that is needed for an as built, or building a renovation model. We can quickly capture, analyze, and model whatever the job may be.

### ESTIMATING

QuoteSoft Estimating software that quickly calculates jobs to provide customers with accurate estimates.



# CAPABILITIES

## WELDS & MATERIALS

### WELDING PROCESS

MIG  
TIG  
Stick  
Submerged Arc  
Plastic

### CERTIFIED WELDERS

ITI & AWS Certified Welders On Staff

### WELD TESTING

DYE  
X-RAY (Off-Site Vendor)

### WELD CLEANING

As Required Per Specification

### STANDARD IN STOCK MATERIALS

Stainless Steel  
Carbon Steel  
Aluminum  
Galvanized

## SPECIALTY MATERIALS

AR 200\*  
AR 400\*  
T1A\*  
Ceramic Tile (1/4" & 1/2")\*  
Rhinohyde\*  
Hastelloy C276  
Stainless 309, 310, 317  
Fiberglass  
High Temperature Flex and Expansion Connections

\* always kept in stock

# CAPABILITIES

## PAINTING

### PAINT PROCESS USED

Kremlin AIR Assist Sprayer

### APPLICATIONS

Epoxy  
Enamel  
Cold Galvanizing  
High Temperature Painting – Up to 800 Degrees



## TRUCKING FLEET

5th Wheel Trucks (44', 40' & 35' options)

JLG's

Stake Trucks (8' to 24' options)

Scissor Lifts

24' Enclosed Cube Vans

Connex Boxes (20' & 40' available)





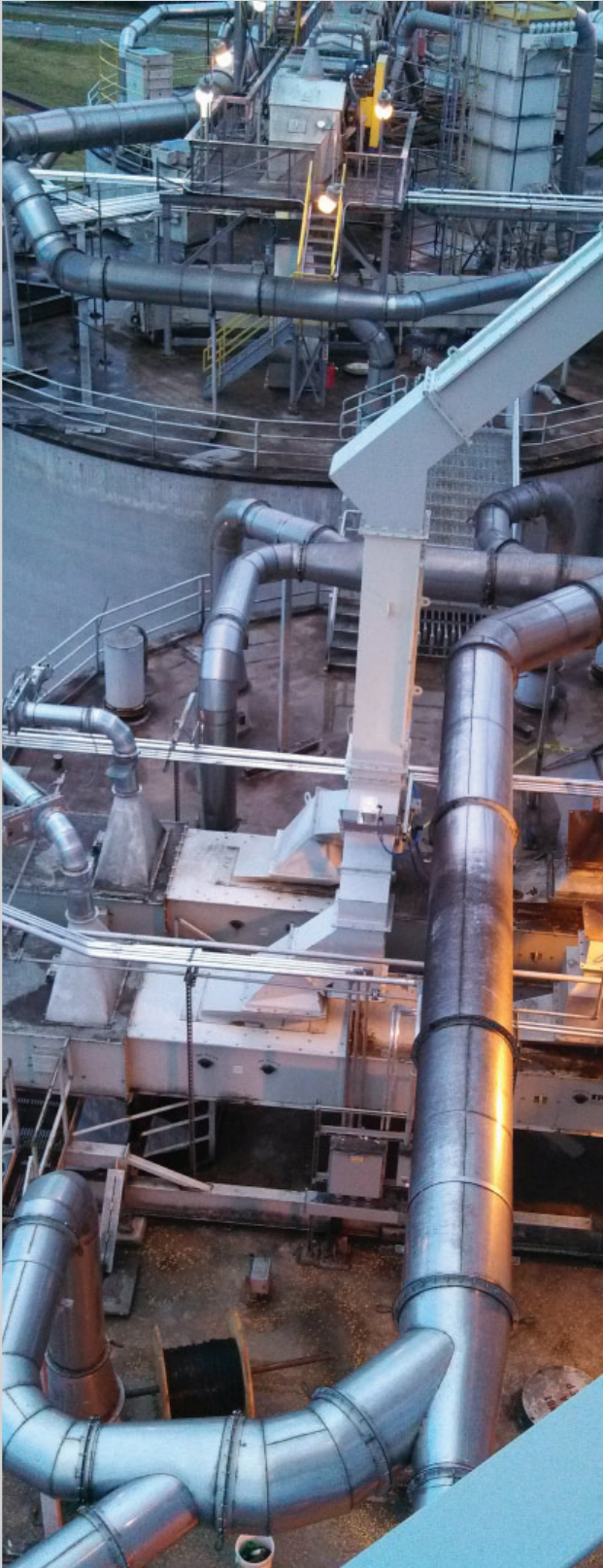
# **INDUSTRIAL PROJECTS**

# INDUSTRIAL BAGHOUSE & DUST COLLECTION SYSTEM





# SPOUTING





# HOPPER





# REGENERATIVE THERMAL OXIDIZER (RTO)



# TANKS





## CUSTOM RAIL CAR HOOD



# DUST COLLECTION





# INDUSTRIAL DUCT WORK



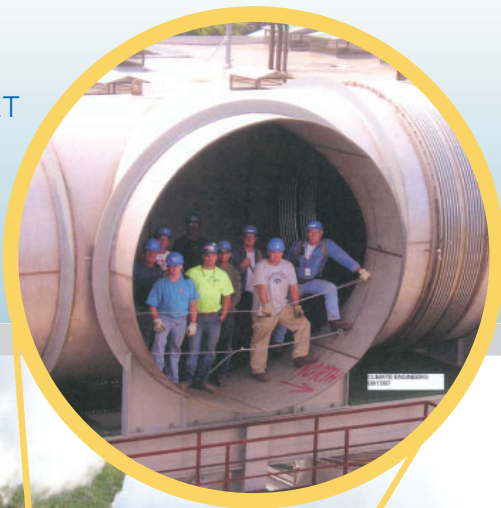
# HOPPER





# RTO PROJECT

12' DIAMETER  
275 LINEAR FEET



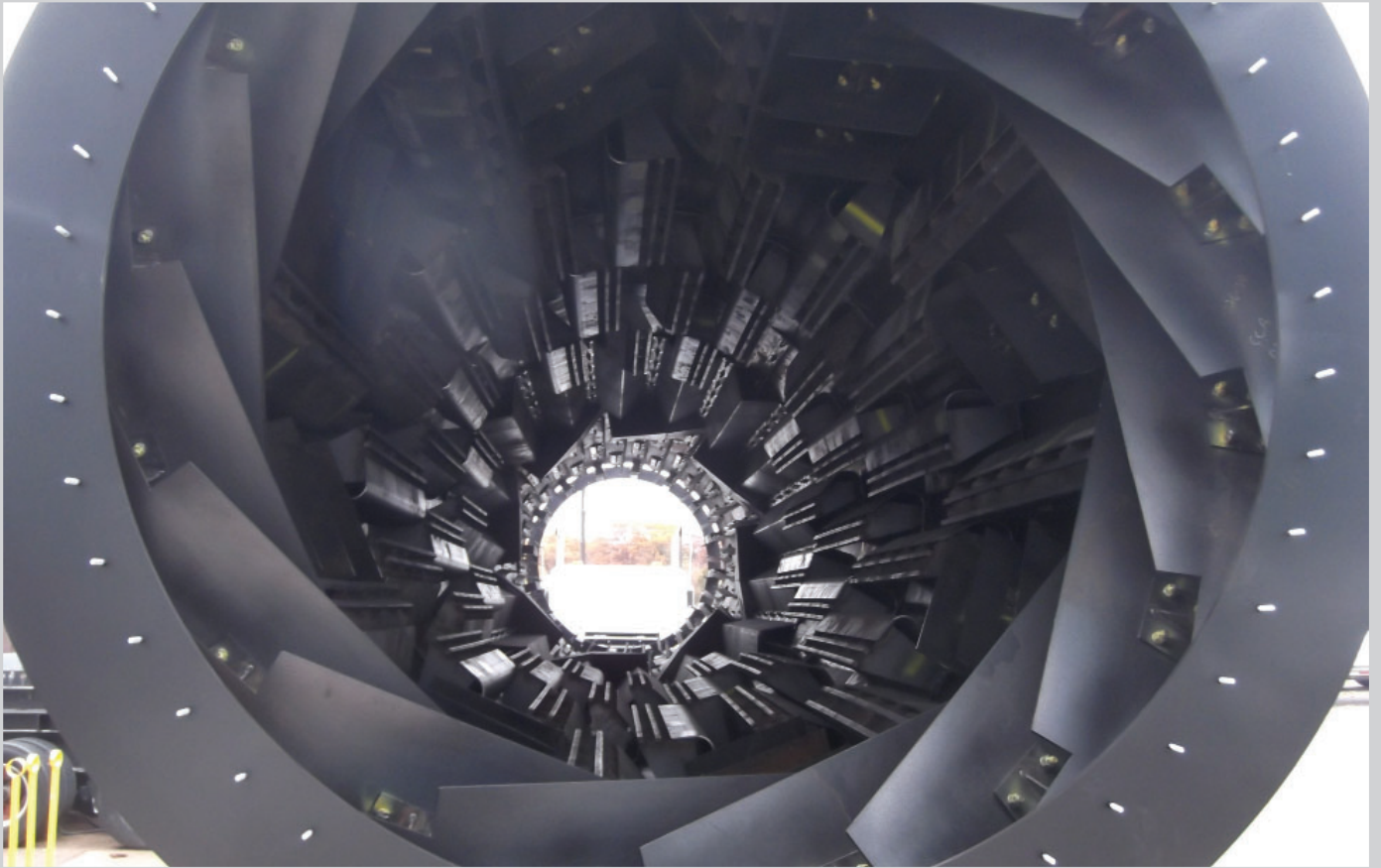
7' DIAMETER  
152' STACK

10' DIAMETER  
152' STACK

10' DIAMETER  
152' STACK

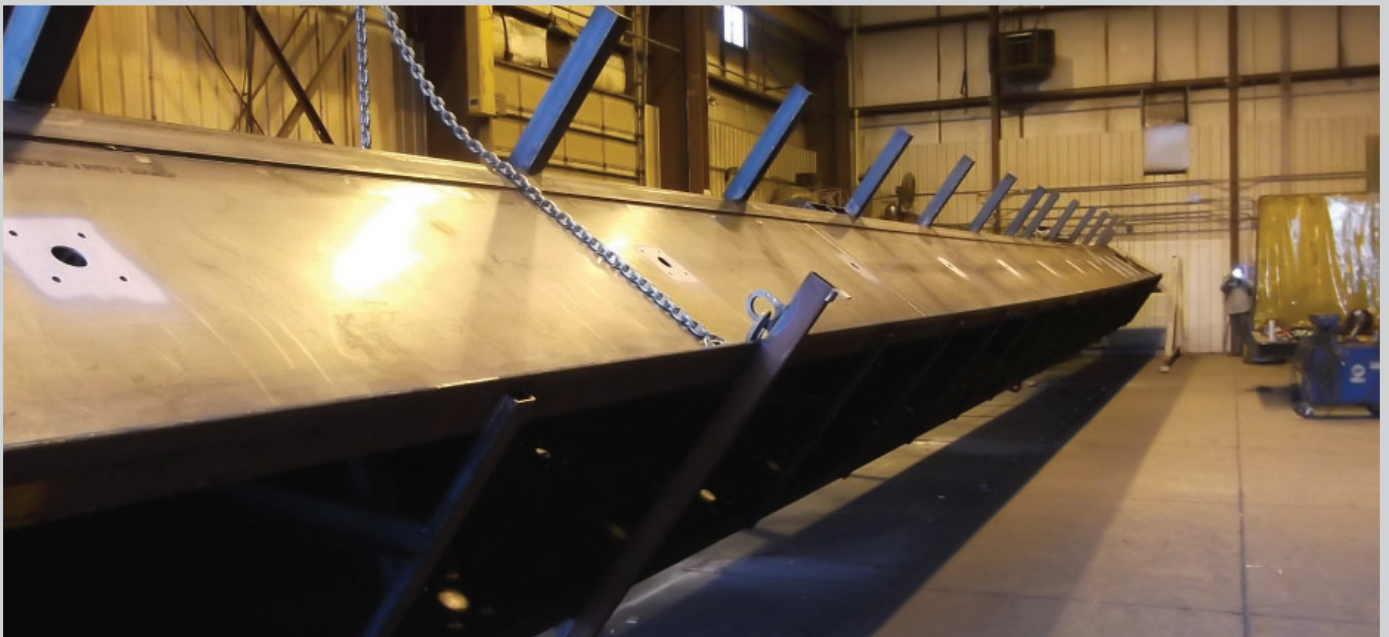
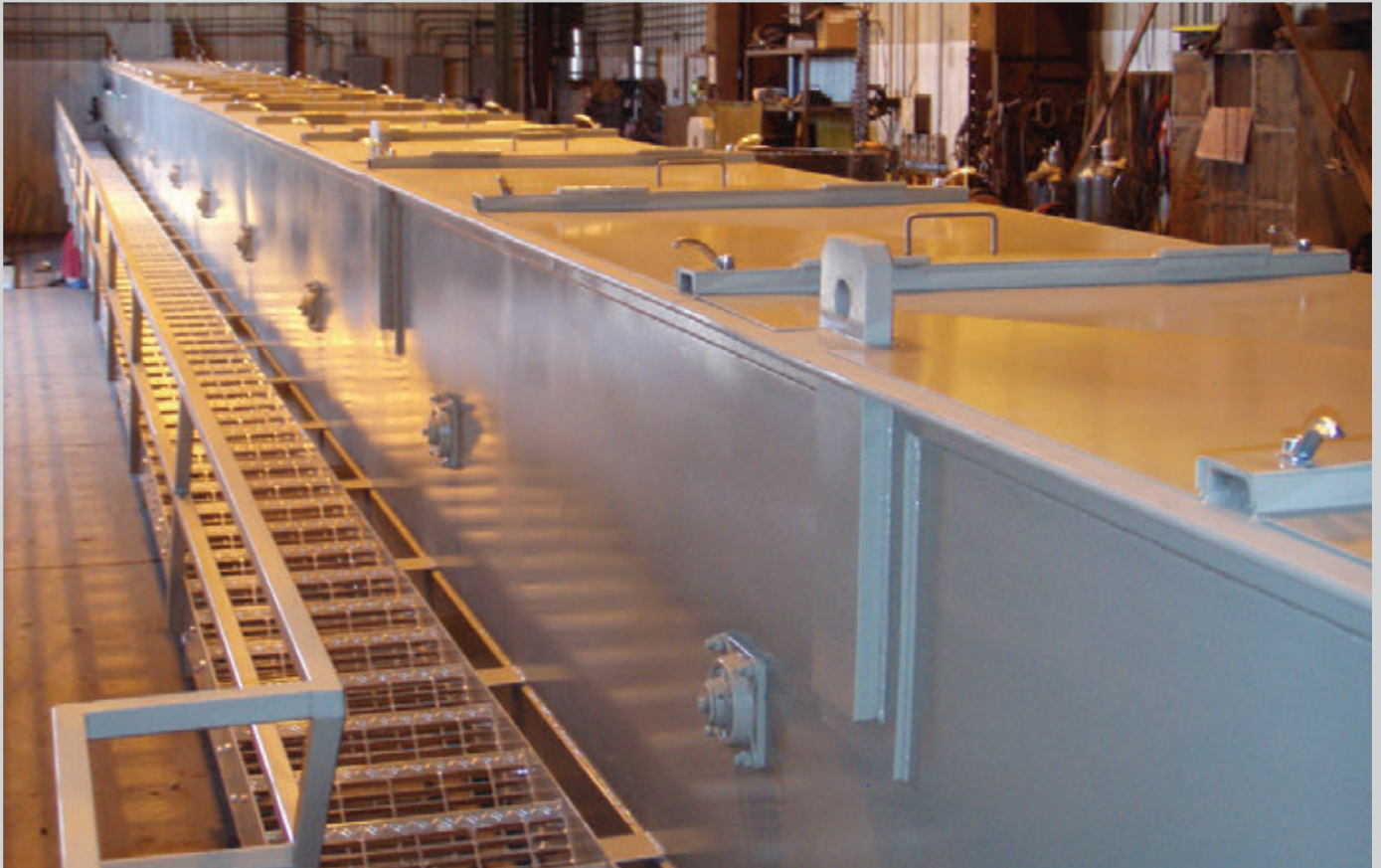
# **MANUFACTURING PROJECTS**

# DRYER DRUM



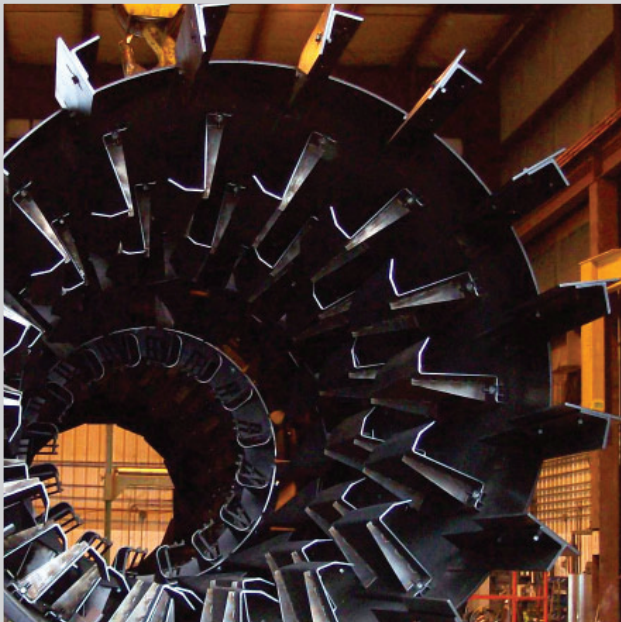


# CONVEYOR





# DRYER DRUM





# HOPPER





# ROAD MIX MACHINE



## PORTABLE CONCRETE SILO





## SELF ERECTING STORAGE SILO





# SILO





# DRUMS



# HVAC

heating, ventilation,  
& air conditioning

# DUCTWORK



- Healthcare
- Office Buildings
- Dealerships
- Educational
- Industrial Plants





# MECHANICAL ROOM DUCTWORK



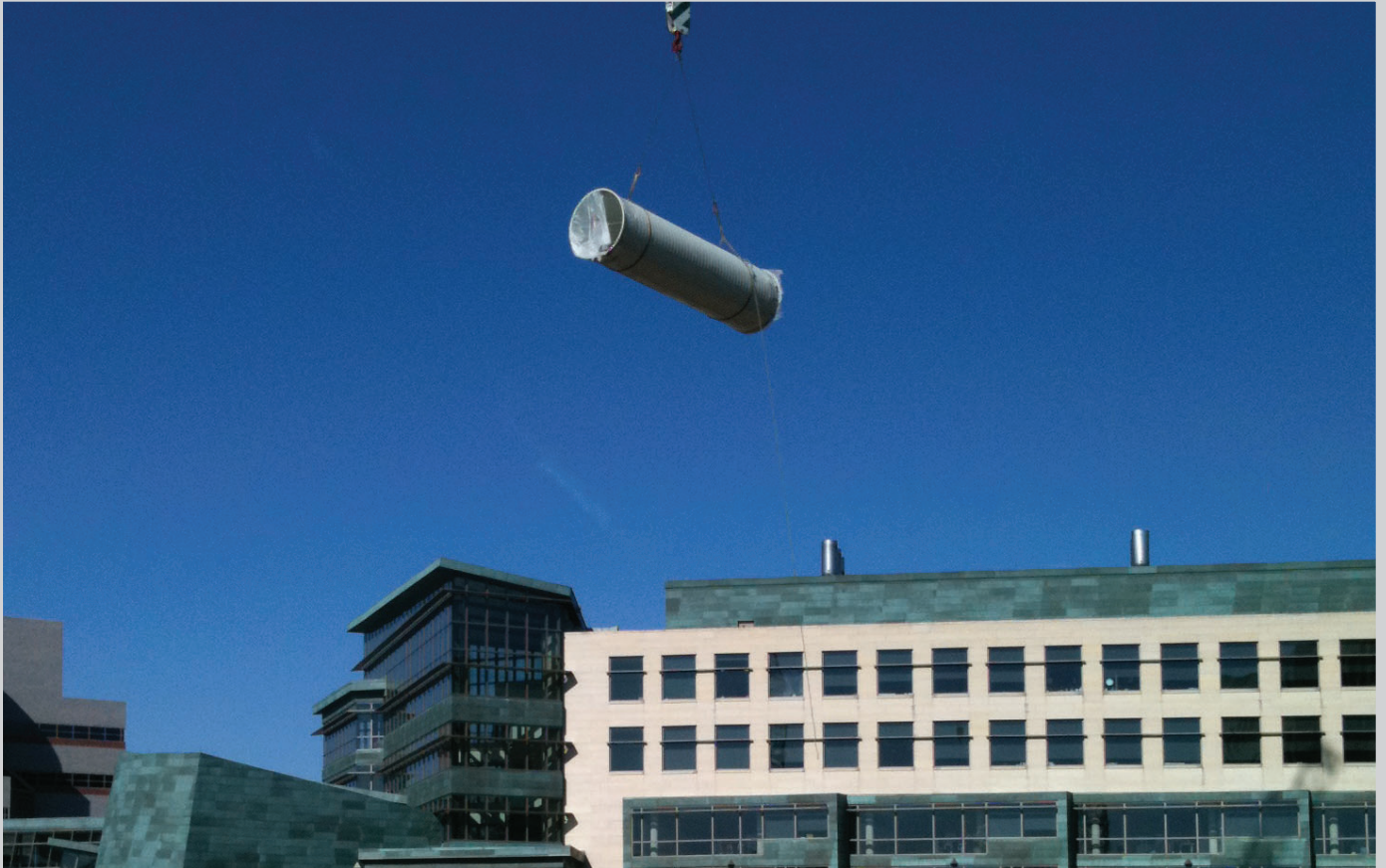


## EXPOSED & ROOF DUCTWORK





# UNDERGROUND DUCTWORK



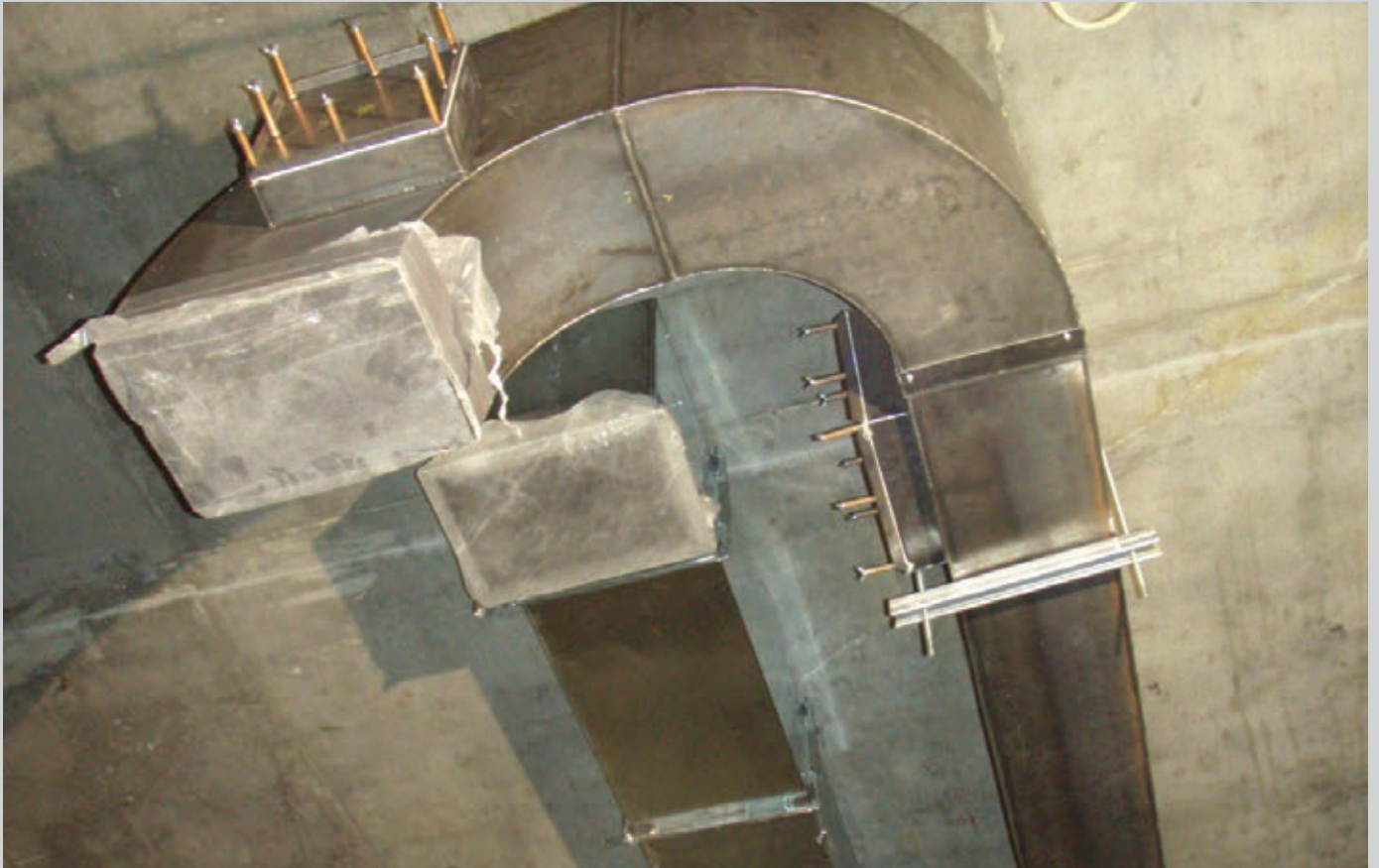


# EQUIPMENT INSTALLATION





## GREASE DUCTS





# CUSTOM AIR HANDLING UNIT INSTALLATION





## CUSTOM AIR HANDLING UNITS by CLIMATE ENGINEERS



## SERVICE

- Emergency Services — 24/7/365
- Preventative Maintenance
- Controls Solutions
- Unit Replacement
- Certified Technicians

**AMERICAN  
AUTO-MATRIX®**





# THERMADUCT





# KOOLDUCT





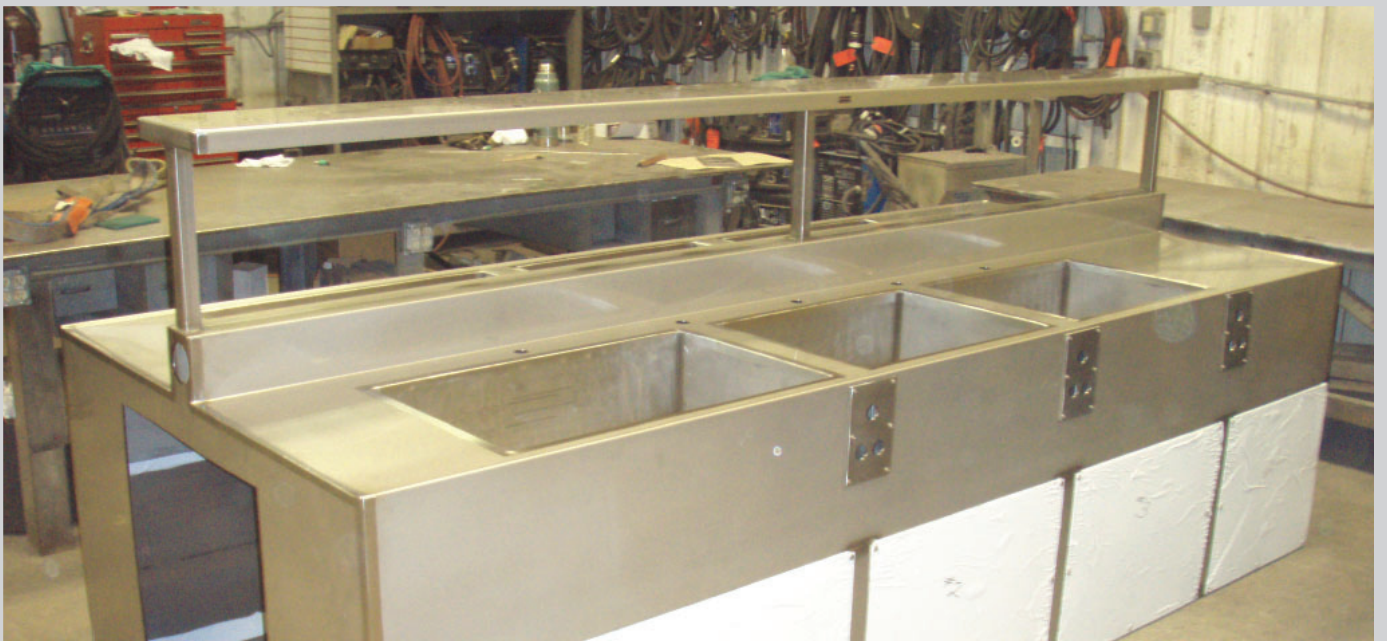
# ThermaRound



# **SPECIALTY PROJECTS**

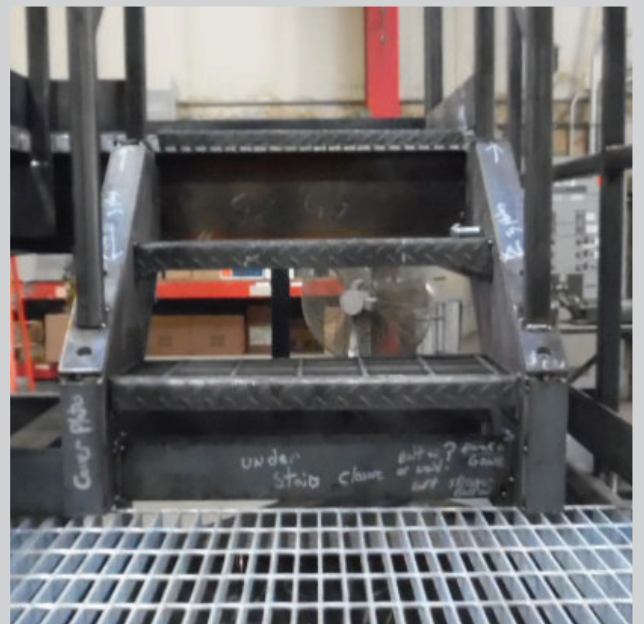


## CUSTOM STAINLESS STEEL SINK



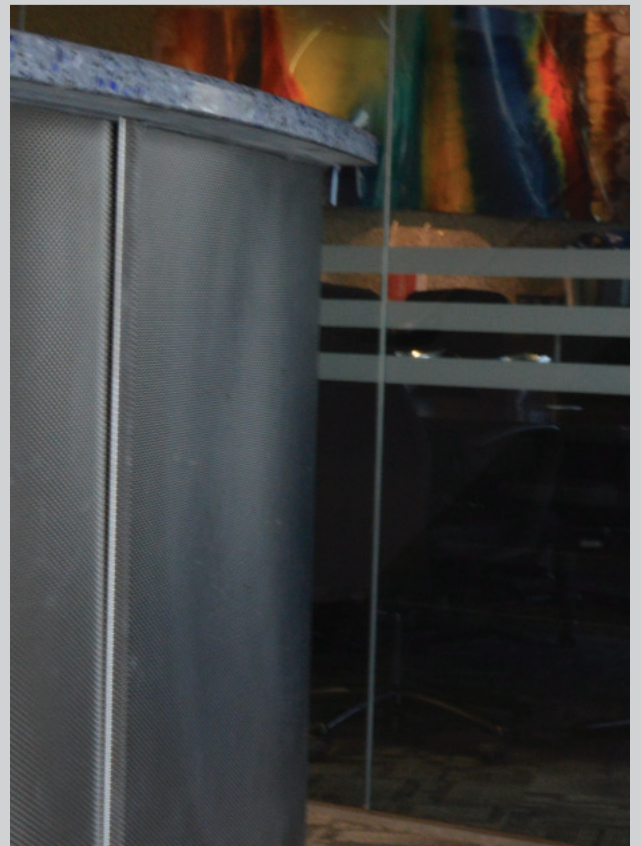
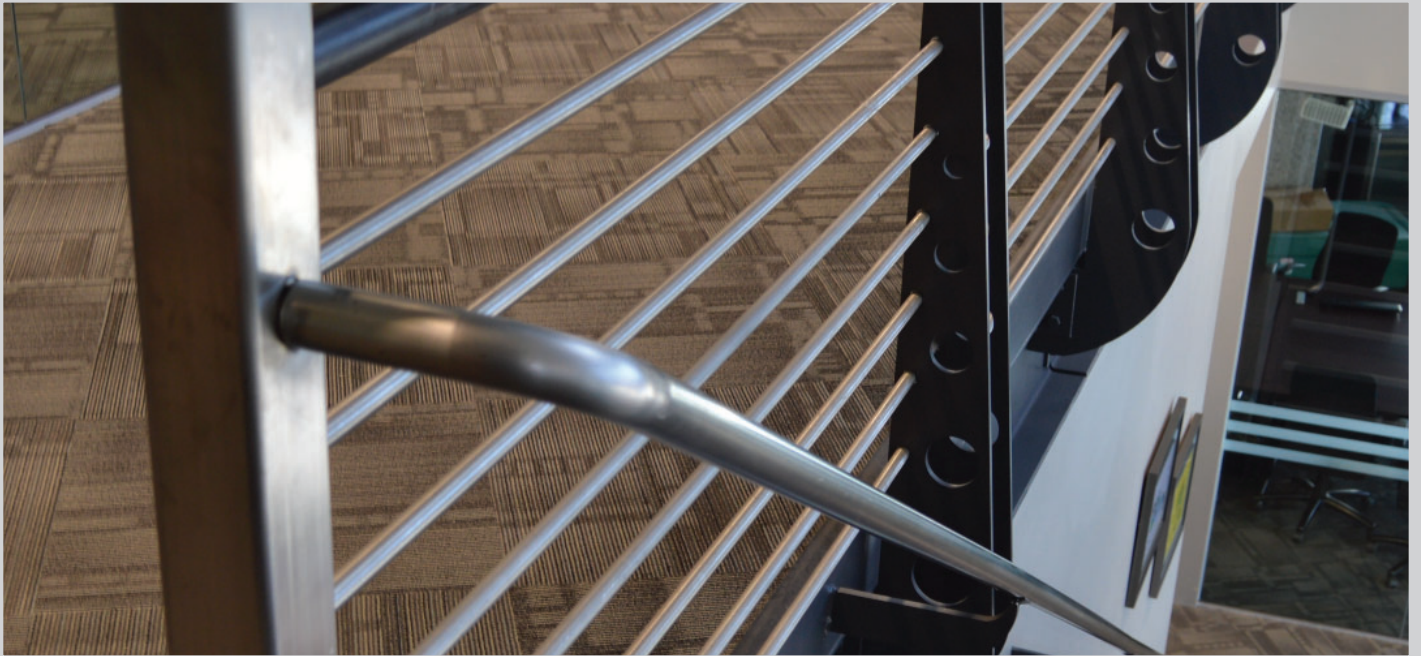


## CUSTOM PLATFORMS & STAIRS





## CUSTOM FLASHING & HANDRAILS



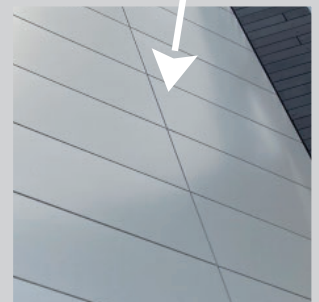
# **ARCHITECTURAL PROJECTS**



## GFCR PANELS



# ALUMINUM ARCHITECTURAL PANELS





# ALUMINUM ARCHITECTURAL PANELS



# ALUMINUM ARCHITECTURAL PANELS





# ALUMINUM ARCHITECTURAL PANELS

